



Department Display Unit

User Manual

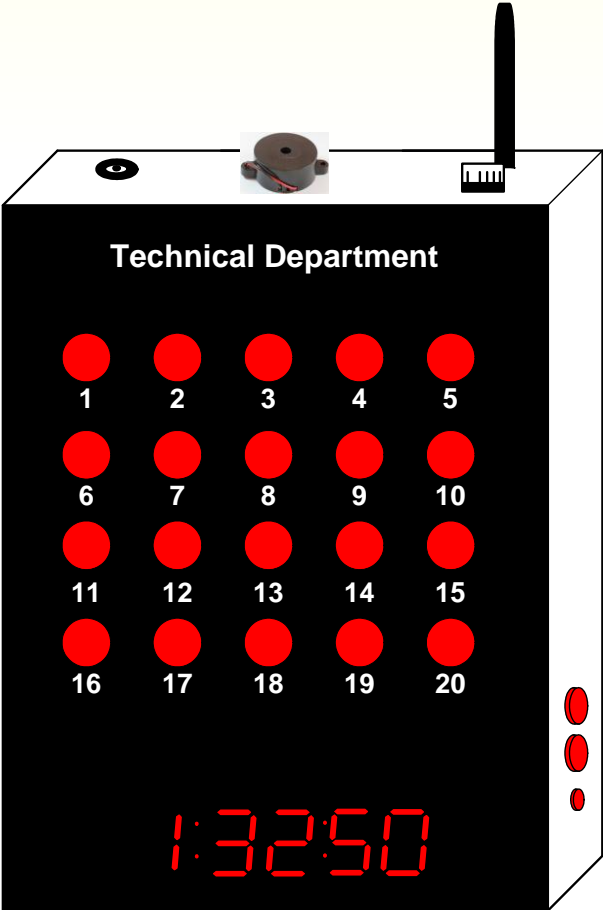


Table of Contents.

1. Introduction	04
2. Product Overview	05
3. Schematic Diagrams	07
4. Dimension and Installation	09
5. Specifications	10

1. Introduction

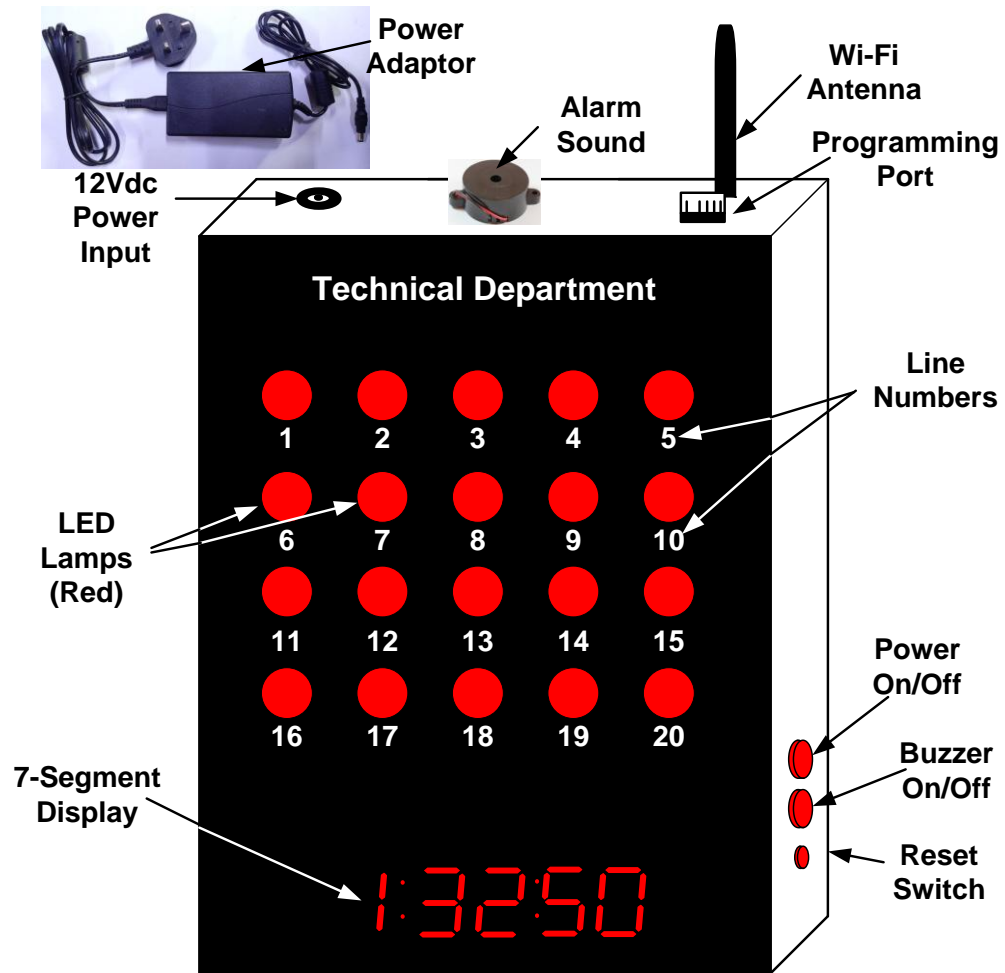
Department Display Unit is a part of the “Andon System”. The unit consists of LED lamps, 7-Segment display and Alarm buzzer. The department display is only an output device. The data required to work this unit, comes from Andon software running on PC.

One LED lamp of the unit indicates a one module in the work floor. When problem occur in a production line, relevant lamp of the department display will turn on automatically. As well as alarm buzzer will gives a sound alert.

The 7-segment display indicates cumulative downtime relevant to the department.

12V, 5A SMPS power adaptor used to power the device. Standard “SHUNCOM SZ12” module is used to communicate the device with Andon software through Wi-Fi network.

2. Product Overview

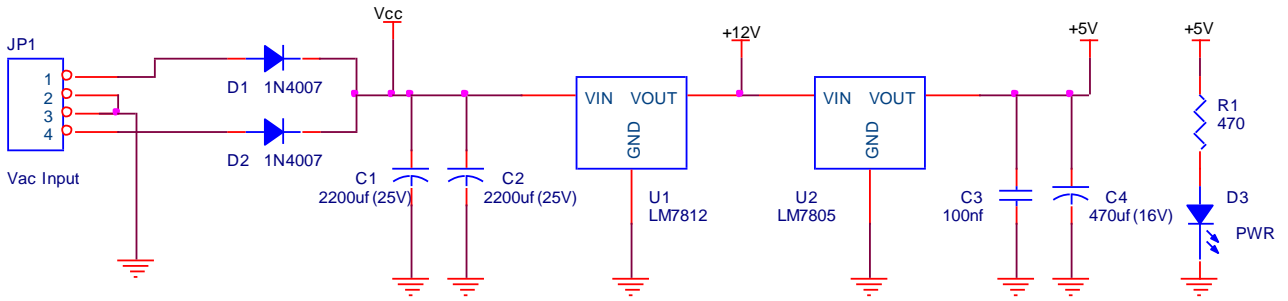


1. **12Vdc Power Input** : Power supply input for this unit.
2. **12Vdc Power Adaptor** : 12V, 5A SMPS Power supply.
3. **Programming port** : This port used to program the device.
4. **Alarm Sound** : 12V, Buzzer unit.
5. **LED Lamps** : 12V, LED lamps.
6. **7-Segment Display**: 7 segment display panel, red colour.

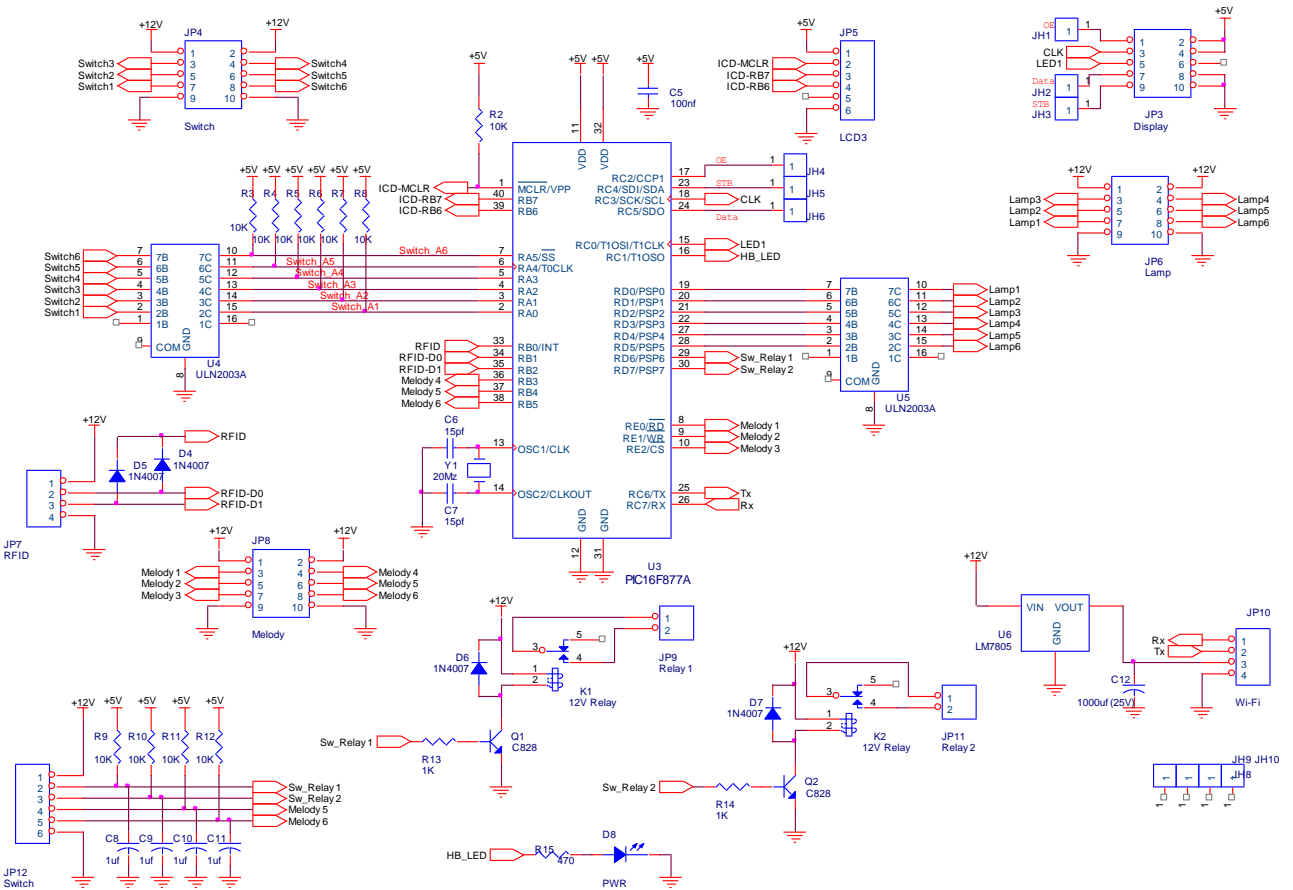
- 7. Power On/Off** : Turn on and Off the unit.
- 8. Buzzer On/Off**: Disable and Enable Buzzer unit.
- 9. Reset Switch** : Reset the current Sound alert.
- 10. Wi-Fi Antenna** : Wi-Fi connectivity is used to communicate data with computer. Standard Wi-Fi module (SHUNCOM- SZ12) is used for this function.

3. Schematic Diagrams

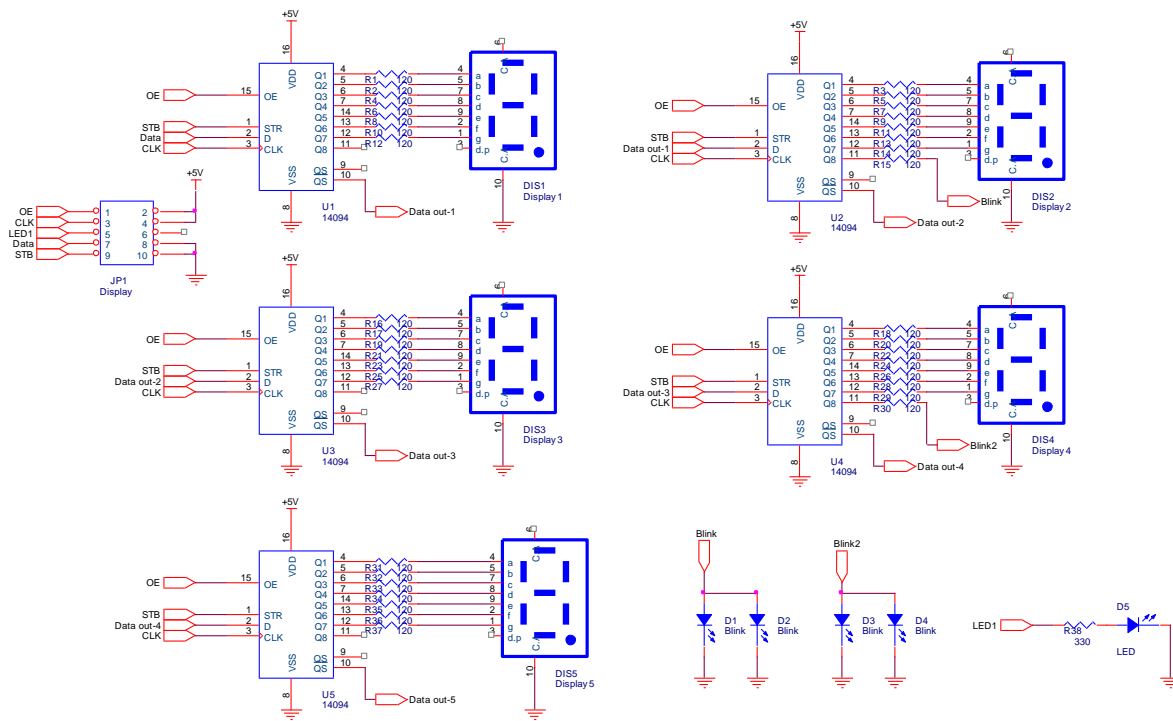
Power Supply Circuit



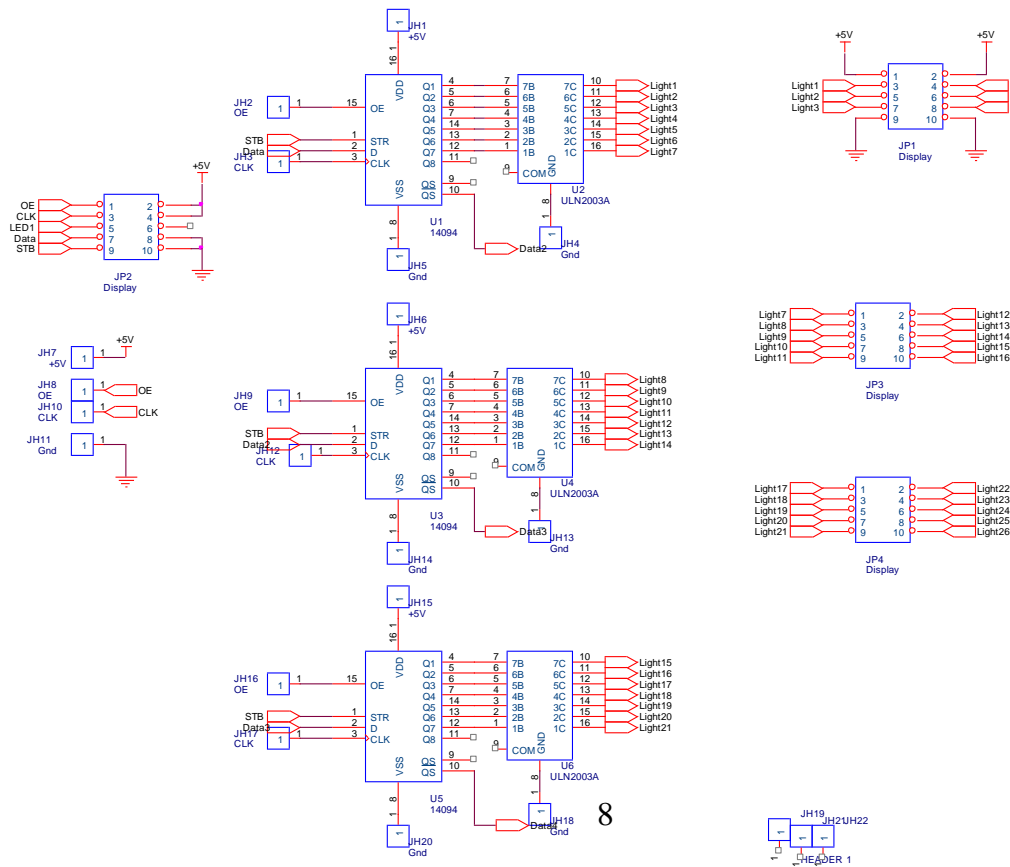
Processing card



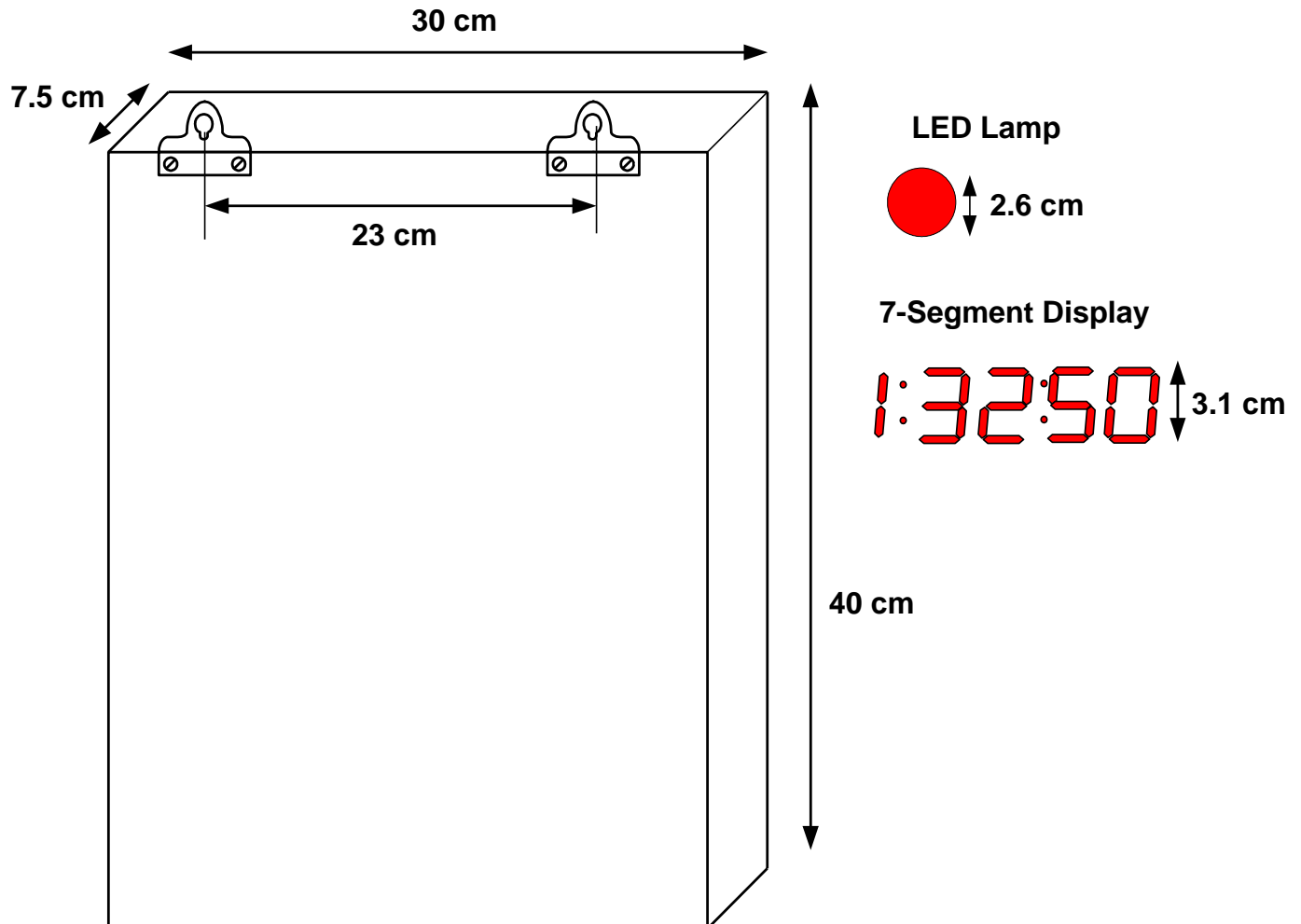
Display Circuit



Driver Circuit



4. Dimensions



- Mount on a solid surface.
- Install this unit where, the LED Lamps can be seen anywhere of the department.
- Dust conditions on the unit may impair the performance of this unit.
- The ambient temperature should be between 0°C and 35°C to ensure optimal operation.

5. Specifications

SN	Parameter	Value
1	DC Voltage	12 Vdc
2	DC Current	5 A
3	Baud-Rate	9600 bps
4	Operating Temperature	0 ~35 'C
5	Communication	TCP/IP
6	Dimension D x W x H	40 x 30 x 7.5 cm

“Qio” Queue Management Systems

Electronic Andon Systems

Sky Security Systems

Digital Watches and Timers

Alarm Systems

Power Supplies

LED Display Systems

Electronic Books

Electronic Classes

PIC Microcontroller Accessories

Printed Copper Boards



Sky Technologies.

For all kind of Microcontroller Based electronic circuit Designing,
PCB designing and fabricating.